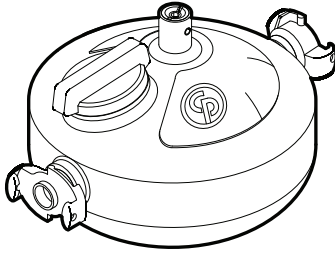




Spare parts list

Lubricator 43 & 1300





2013-05

No. 9800 0409 01a

© Copyright Chicago Pneumatic Construction Tools
STOCKHOLM • SWEDEN



Introduction

Welcome! Protect your investment in the world's finest air tools. Use genuine CP replacement parts.

The purchase of replacement parts for your CP tools deserves the same good judgment that resulted in the purchase of the tools themselves. Each genuine CP part is made from carefully selected and inspected material, subjected to sophisticated machinery and finishing processes and heat-treated to produce just the right combination of hardness, ductility and impact resistance for its intended use. Each part is identical to, and made concurrently with, parts used in production tools.

The use of parts other than genuine CP replacement parts can lead to substandard performance, early failure, possible damage of other parts and, in some instances, unsafe conditions.

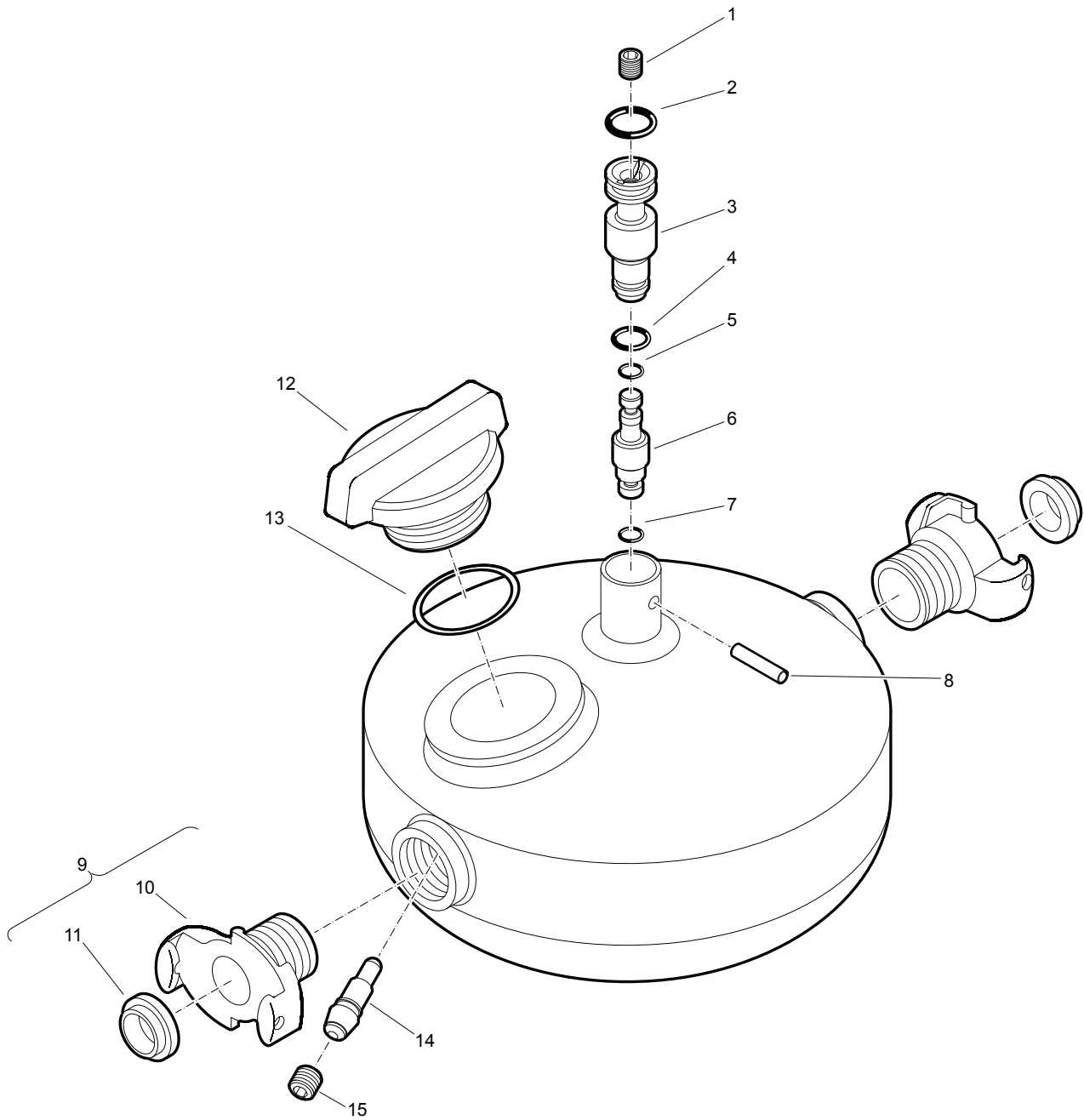
Use only authorized parts. Any damage or malfunction caused by unauthorized parts will not be covered by Warranty or Product Liability.

Any machine modification not approved by Chicago Pneumatics may result in serious injuries to yourself or others.

To reduce the risk of injury, read and understand the relevant safety and operating instructions before operating the machine.

Before undertaking any maintenance or changing the inserted tool on pneumatic machines, always switch off the air supply and bleed the machine by depressing the start and stop device. Then disconnect the air hose from the machine.

Lubricator 43 and Lubricator 1300 are accessories to be used with pneumatic tools externally for adequately lubricating the internal parts.





No.	Ordering No.	Quantity		Description
		Lubricator 43	Lubricator 1300	
1	0192 1168 00	1	1	Set screw M4x6
2	0663 2116 00	1	1	O-ring dia. 9.3x2.4
3	9001 0003 36	1	1	Adjusting screw
4	0663 6114 00	1	1	O-ring dia. 7.1x1.6
5	0663 6110 00	1	1	O-ring dia. 3.1x1.6
6	9001 0003 53	1	1	Valve cone
7	0663 2110 00	1	1	O-ring dia. 3.3x2.4
8	0108 1193 00	1	1	Spring pin dia. 3x14
9	9000 0303 00	-	2	Claw coupling complete, G1A (Includes item No. 10 & 11)
9	9001 0005 03	2	-	Claw coupling complete, 1" NPT US type (Includes item No. 10 & 11)
10	—*)	1	1	Claw coupling
11	9000 0000 00	-	1	Gasket
11	9001 0005 15	1	-	Gasket
12	9090 0371 00	1	1	Plug
13	0663 2128 00	1	1	O-ring dia. 26.2x3
14	9001 0003 43	1	1	Check valve
15	3115 1746 02	1	1	Nozzle

—*) Not delivered separately



2013-05

No. 9800 0409 01a

© Copyright Chicago Pneumatic Construction Tools
STOCKHOLM • SWEDEN

Chicago Pneumatic Construction Tools